

Bylee

Worklist: 5026

<u>LAB CASE</u>	<u>ITEM</u>	<u>ITEM TYPE</u>	<u>DESCRIPTION</u>	
C2021-1238	1	UCK	AM 25/AM 26 Urine MultiDrug/THC Screen by LC-QQQ	
C2021-1243	1	BCK	AM 25/AM 26 Blood MultiDrug/THC Screen by LC-QQQ	
C2021-1269	1	BCK	AM 25/AM 26 Blood MultiDrug/THC Screen by LC-QQQ	
C2021-1291	1	BCK	AM 25/AM 26 Blood MultiDrug/THC Screen by LC-QQQ	
C2021-1295	1	BCK	AM 25/AM 26 Blood MultiDrug/THC Screen by LC-QQQ	
C2021-1305	1	BCK	AM 25/AM 26 Blood MultiDrug/THC Screen by LC-QQQ	
C2021-1306	1	BCK	AM 25/AM 26 Blood MultiDrug/THC Screen by LC-QQQ	
C2021-1312	1	BCK	AM 25/AM 26 Blood MultiDrug/THC Screen by LC-QQQ	
C2021-1331	1	UCK	AM 25/AM 26 Urine MultiDrug/THC Screen by LC-QQQ	
C2021-1333	1	BCK	AM 25/AM 26 Blood MultiDrug/THC Screen by LC-QQQ	
C2021-1334	1	BCK	AM 25/AM 26 Blood MultiDrug/THC Screen by LC-QQQ	
C2021-1337	1	UCK	AM 25/AM 26 Urine MultiDrug/THC Screen by LC-QQQ	

AM# 25: Multi-Drug Screen in Blood and Urine by LC-MS/MS

BWylie

Extraction Date: 6/8/2021

Analyst: Britany Wylie

Plate lot#: 201206

Plate Expiration: 6/6/2021

Mobile phase A: 10mM Amm Form

0.5M Ammonium Hydroxide

Blank Blood Lot: 20K20702

LCMS-QQQ ID: 69679

Mobile phase B: 0.1% Formic Acid in MeOH

Ethyl Acetate

LC Methanol

Column: Phenomenex Phenyl Hexyl (4.6x50mm, 2.6um)

Pre-Analytic:

- 1. Check levels of mobile phases and needle wash refill as needed. Ensure waste is not full.
- 2. Ensure correct column is installed and begin mobile phase flow allow to equilibrate ~ 30 minutes.

Analytic:

- 1. Remove standards, plate, controls, and samples from cold storage. Allow to reach room temperature.
- 2. Urine hydrolysis pipette: 250 ul urine in blank well, add 40 ul BG Turbo, add 100 ul 500 mm sodium phosphate buffer mix for at least five minutes ambient temperature.
Pipette **250 µL blood (calibrated pipette)** or 250 ul urine in wells of analytical (standards) plate. **Pipette ID: 1926134**
- 3. Place on shaking incubator at ambient temp., 900 rpm for 15 minutes.
- 4. Pipette **250 µL of 0.5 M ammonium hydroxide** in wells of analytical plate.
- 5. Place on shaking incubator at ambient temp., 900 rpm for 15 minutes.
- 6. Transfer **300 µL of blood or urine+base** mixture to corresponding wells of SLE+ plate.
- 7. Apply positive pressure for approx. 10-15 seconds (or until no liquid remains on top of sorbent).
(Load at 85-100 PSI- Selector to the right) Manifold ID: 66792
- 8. Wait 5 minutes.
- 9. Add **900 µL ethyl acetate.**
- 10. Wait 5 minutes.
- 11. Apply positive pressure for approx. 10-15 seconds. *(12-15 PSI- Selector to the left).*
- 12. Add **900 µL ethyl acetate.**
- 13. Wait 5 minutes.
- 14. Apply positive pressure for approx. 10-15 seconds. *(12-15 PSI- Selector to the left).*
- 15. Remove plate containing eluate. **Urine samples add 50ul 1% HCl in MeOH** Place on SPE Dry and evaporate to dryness at approx. 35°C.
SPE Dry ID: 66819
- 16. Reconstitute in **100 µL 20% LC MeOH** in LC Water and heat seal plate with foil. Place in autosampler and run worklist.

Post-Analytic

- 1. Open quantitation software and create a new quantitation batch.
- 2. Make necessary changes to integration limits
- 3. Evaluate samples, S/N of primary transition >5 and S/N of secondary transition >3 or evaluation of peak symmetry and resolution. Within +/- 2% or 0.1 min RT of administrative control. Calculated concentration 5 or greater or 2-5 for discretionary range.
- 4. Did all QCs pass for each analyte? (If no is it described in comments?)
- 5. Central File Packet to include: LIMS Worklist, Method Checklist, Calibration and Control Reports

COMMENTS: *Due to the extraction occurring after the expiration of the analytical plate, an external control was included with this run as specified in the analytical method.*

Methyphenidate not evaluated in blood

BW

AM 25
5/12/21 WORKLIST

BWylee

	1	2	3	4	5	6	7	8	9	10	11	12
A	IS + Cal. 1	1305-1	1331-1									
B		1306-1	1337-1									
C	neg	1312-1										
D	pc	1333-1										
E	1243-1	1334-1										
F	1269-1	neg urine										
G	1291-1	urine pc										IS + Cal. 1
H	1295-1	1238										IS + Cal. 1

All wells to contain 60 µl of residual DMSO

Case #: C2021-____ -
(SLE PLATE POSITION)

BWylee

Toxicology AM method 25/28 urine external control prep

working solution 10000 ng/ml in meoh diphendyramine, methamphetamine, alprazolam, methocarbamol, methylphenidate, morphine

Stock solution 1mg/ml 50 ul each in 4700 ul MeOH (Honeywell EA078-US)

ppd 4/14/21: Exp: 4/14/2022 lot 41422 by AMN

Drug	lot	expiration
Methamphetamine	FE03132001	7/1/2025
methocarbamol	FN01212005	1/1/2023
alprazolam	FE06102008	6/1/2025
Diphendyramine	FN02212011	3/1/2025
Methylphenidate	FE01212007	2/1/2025
Morphine	FE03232010	4/1/2025

AM 25/28 control 500 ul working solution (41422) in 4500 ul negative urine (1000ng/mL Expected concentration)

ppd 4/14/22, exp 4/14/22 lot u41422 negative urine 2121 by AMN

AM 25/28 Blood Control: 50ul working solution (41422) in 4950 ul neg blood (100ng/mL Expected concentration)

ppp 4/14/21, exp 4/14/22 lot b41422 neg blood 20J20793 by AMN

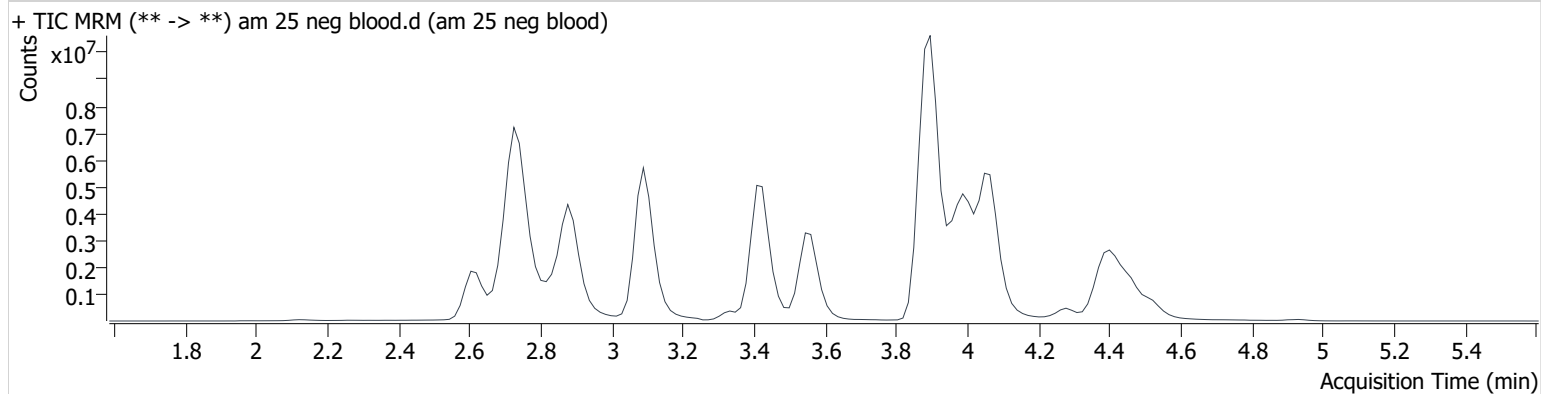
AM #25 Multi-Drug Screen Results

B. Wylie

Batch results D:\MassHunter\Data\2021\am 25-26\6-08-21\QuantResults\mds.batch.bin
Calibration Last Update 6/9/2021 12:24:19 PM

Instrument	69679	Data File	am 25 neg blood.d
Type	Sample	Sample	am 25 neg blood
Acq. Method	mds 6-8-21.m	Operator	Britany Wylie
Sample Position	P1-C1	Comment	
Injection Volume	2.5		
Acq. Date-Time	6/8/2021 2:43:12 PM		
Sample Info.			

Sample Chromatogram



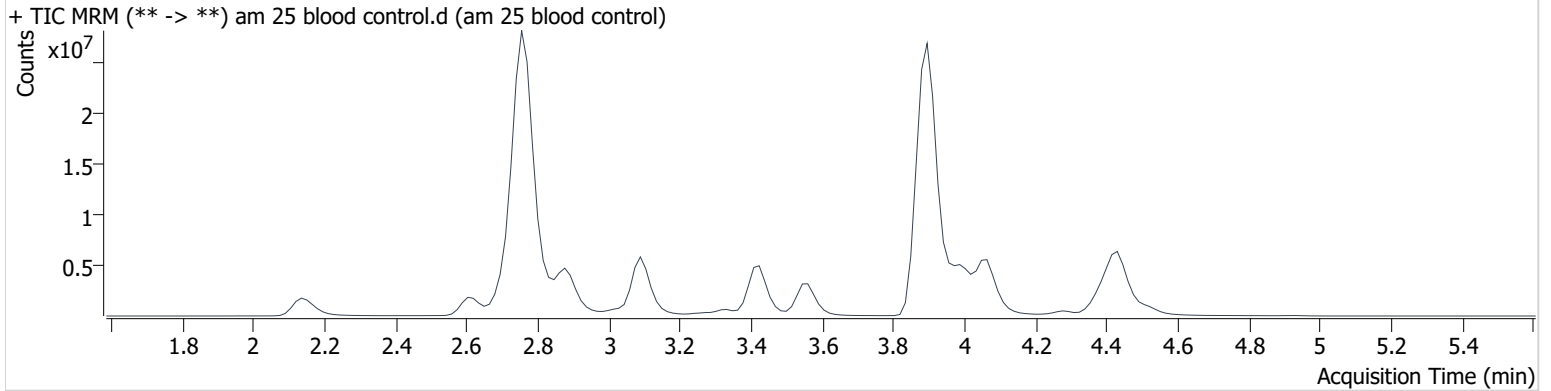
AM #25 Multi-Drug Screen Results

B. Wylie

Batch results D:\MassHunter\Data\2021\am 25-26\6-08-21\QuantResults\mds.batch.bin
Calibration Last Update 6/9/2021 12:24:19 PM

Instrument	69679	Data File	am 25 blood control.d
Type	Sample	Sample	am 25 blood control
Acq. Method	mds 6-8-21.m	Operator	Britany Wylie
Sample Position	P1-D1	Comment	
Injection Volume	2.5		
Acq. Date-Time	6/8/2021 2:49:54 PM		
Sample Info.			

Sample Chromatogram



Name	RT	Resp.	S/N	S/N	ISTD Resp.	Calc. Conc.
Alprazolam	4.437	8856978	2087.6	2463.6	2466403	98.699
Diphenhydramine	3.906	51123097	1425.2	115379.6	40801892	92.084
Methamphetamine	2.766	45602712	498.4	1367.3	18667513	62.417
Methocarbamol	3.278	663293	209.9	254254.7	2331117	104.921
Methylphenidate	3.341	743283	22.8	25.7	19771823	1.406
Morphine	2.140	2438152	∞	456.7	154306	113.384

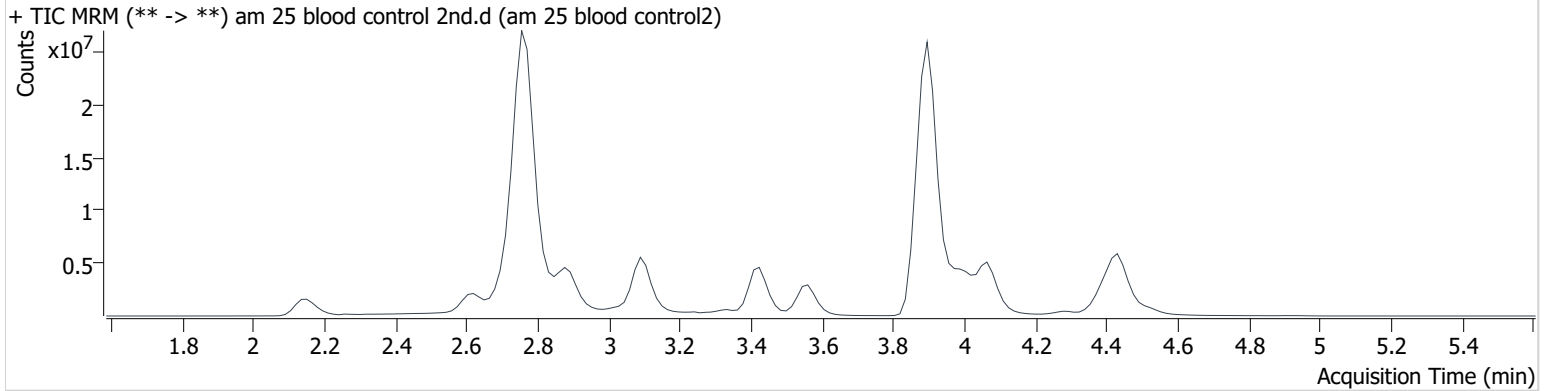
AM #25 Multi-Drug Screen Results

B. Wylie

Batch results D:\MassHunter\Data\2021\am 25-26\6-08-21\QuantResults\mds.batch.bin
Calibration Last Update 6/9/2021 12:24:19 PM

Instrument	69679	Data File	am 25 blood control 2nd.d
Type	Sample	Sample	am 25 blood control2
Acq. Method	mds 6-8-21.m	Operator	Britany Wylie
Sample Position	P1-D1	Comment	
Injection Volume	2.5		
Acq. Date-Time	6/8/2021 4:37:01 PM		
Sample Info.			

Sample Chromatogram



Name	RT	Resp.	S/N	S/N	ISTD Resp.	Calc. Conc.
Alprazolam	4.437	8197895	4362.3	991.2	2258807	99.750
Diphenhydramine	3.906	50567516	1571.1	113655.6	39137726	94.956
Methamphetamine	2.766	46583527	∞	211.7	17320442	68.718
Methocarbamol	3.278	645672	709.3	111656.3	2147773	110.853
Morphine	2.155	2321195	29625.7	384.9	142634	116.779

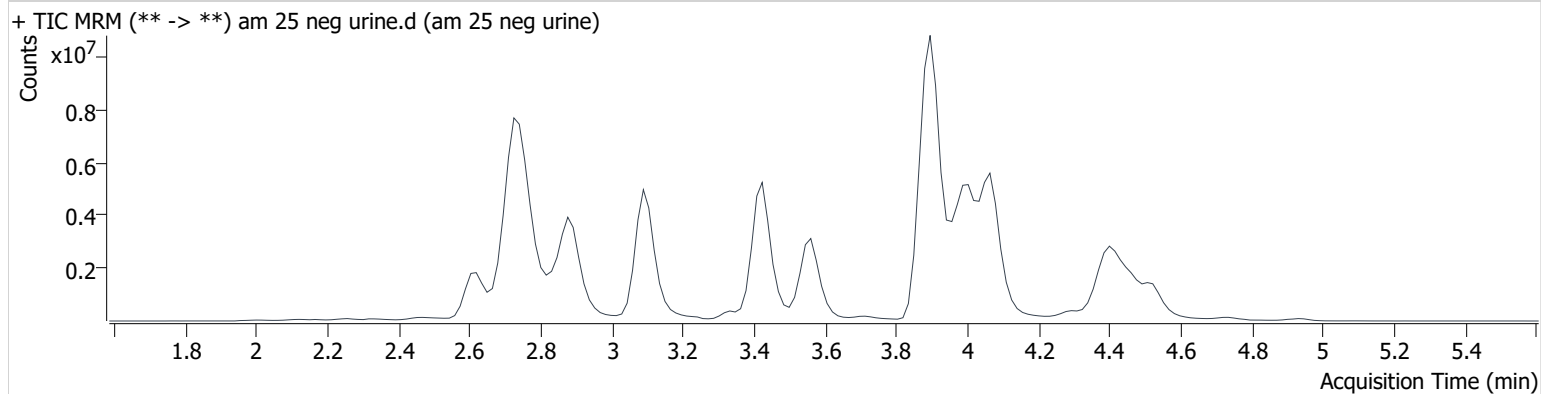
AM #25 Multi-Drug Screen Results

B. Wylie

Batch results D:\MassHunter\Data\2021\am 25-26\6-08-21\QuantResults\mds.batch.bin
Calibration Last Update 6/9/2021 12:24:19 PM

Instrument	69679	Data File	am 25 neg urine.d
Type	Sample	Sample	am 25 neg urine
Acq. Method	mds 6-8-21.m	Operator	Britany Wylie
Sample Position	P1-F2	Comment	
Injection Volume	2.5		
Acq. Date-Time	6/8/2021 3:56:51 PM		
Sample Info.			

Sample Chromatogram



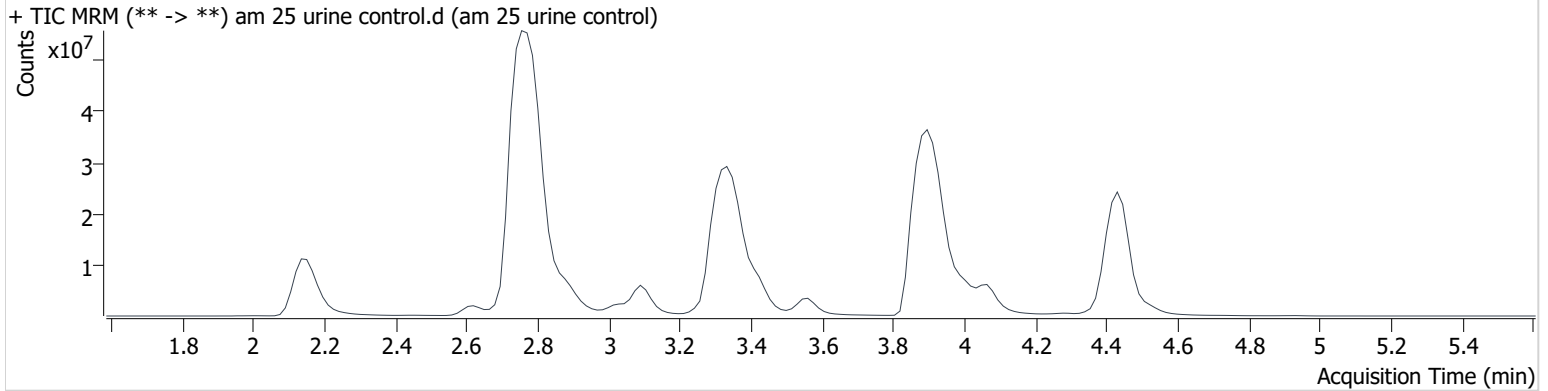
AM #25 Multi-Drug Screen Results

B. Wylie

Batch results D:\MassHunter\Data\2021\am 25-26\6-08-21\QuantResults\mds.batch.bin
Calibration Last Update 6/9/2021 12:24:19 PM

Instrument	69679	Data File	am 25 urine control.d
Type	Sample	Sample	am 25 urine control
Acq. Method	mds 6-8-21.m	Operator	Britany Wylie
Sample Position	P1-G2	Comment	
Injection Volume	2.5		
Acq. Date-Time	6/8/2021 4:03:32 PM		

Sample Chromatogram



Name	RT	Resp.	S/N	S/N	ISTD Resp.	Calc. Conc.
Acetyl Norfentanyl	2.838 High	167844	70.6		19989541	8.201 <10
Alprazolam	4.437	53084231	18963.6	∞	1928988	756.356
Diphenhydramine	3.906	115804737	54397.0	221361.9	30955368	274.940
Methamphetamine	2.782	109635288	21673.1	434.9	14504581	193.127
Methocarbamol	3.278	5326711	261106.7	952.1	1914793	1025.794
Methylphenidate	3.341	111088683	111452.1	180448.0	19233998	215.978
Morphine	2.140	17650058	∞	107574.8	133881	946.026

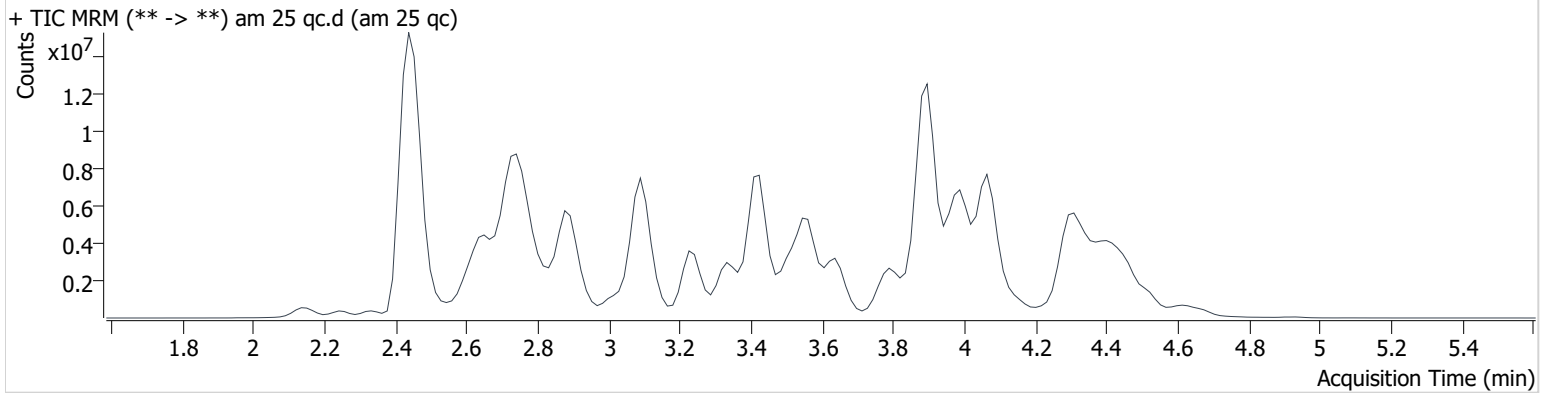
AM #25 Multi-Drug Screen Results

B. Wylie

Batch results D:\MassHunter\Data\2021\am 25-26\6-08-21\QuantResults\mds.batch.bin
Calibration Last Update 6/9/2021 12:24:19 PM

Instrument	69679	Data File	am 25 qc.d
Type	Cal	Sample	am 25 qc
Acq. Method	mds 6-8-21.m	Operator	Britany Wylie
Sample Position	P1-A1	Comment	
Injection Volume	2.5		
Acq. Date-Time	6/8/2021 2:36:31 PM		

Sample Chromatogram



Name	RT	Resp.	S/N	S/N	ISTD Resp.	Calc. Conc.
6-MAM	2.738	32949	49.6	7825.9	1094277	10.000
7-aminoclonazepam	3.334	324454	373.5	116.2	1154190	10.000
7-aminoflunitrazepam	3.563	916730	855.0	312.6	1154190	10.000
Acetyl Fentanyl	3.775	203734	57.5	52251.0	20784204	10.000
Acetyl Norfentanyl	2.655	212812	181160.0	279.2	20784204	10.000
a-hydroxyalprazolam	4.312	36058	100.7	4151.6	1154190	10.000
alpha-hydroxymidazolam	4.417	1009082	397.5	677.0	1154190	10.000
alpha-PHP	3.661	2112997	1182.3	904.4	6720717	10.000
alpha-PVP	3.373	2421336	6698.6	692.0	6720717	10.000
Alprazolam	4.437	927681	800.8	1315.9	2549699	10.000
Amitriptyline	4.380	829509	142.0	230.2	3267878	10.000
Amphetamine	2.646	2660973	443.0	2835.7	6720717	10.000
Benzoylcegonine	3.075	78732	318.0	39.3	146248	10.000
Brompheniramine	3.945	63211	167.8	29.5	41777262	10.000
Buprenorphine	4.322	274140	62706.8	46465.8	1383626	10.000
Bupropion	3.585	2931638	3912.3	1074.4	12351011	10.000
Carbamazepine	4.001	3342764	∞	1578.1	32970	10.000
Carisoprodol	3.968	410353	2087.3	67.0	2539550	10.000
Chlordiazepoxide	4.530	273043	615.8	191.0	2549699	10.000
Chlorpheniramine	3.842	3948184	∞	62802.2	41777262	10.000
Citalopram	3.975	1694655	695.9	200318.6	41777262	10.000
Clomipramine	4.618	894844	757.9	281.2	41777262	10.000
Clonazepam	4.236	131086	340.8	23004.9	2549699	10.000
Clonazolam	4.172	257274	449.0	33097.2	2549699	10.000
Cocaethylene	3.637	2844627	423.5	678810.9	41777262	10.000
Cocaine	3.423	3136380	484.4	18037.8	20499100	10.000
Codeine	2.620	265894	150.2	168.5	180019	10.000
Cyclobenzaprine	4.303	1456157	721.9	61.1	3267878	10.000
Desipramine	4.320	2325051	597.7	563.7	3267878	10.000
Dextromethorphan	3.997	1347550	328.1	645.6	6692279	10.000
Dextrorphan	3.246	1567471	5557.6	466.6	6692279	10.000
Diazepam	4.684	530704	1413.3	685.3	2549699	10.000
Dihydrocodeine	2.558	792515	192.3	515.1	2069689	10.000
Diphenhydramine	3.906	5684512	24366.3	754.2	41777262	10.000

am 25 qc

AM #25 Multi-Drug Screen Results

BWylee

Name	RT	Resp.	S/N	S/N	ISTD Resp.	Calc. Conc.
Doxepin	4.088	1045821	264.1	117.4	11338908	10.000
Doxylamine	3.519	5896920	12727.6	12095.1	6692279	10.000
EDDP	3.981	891721	706157.6	180896.4	2069689	10.000
Estazolam	4.331	1450645	1845.5	1026.5	2549699	10.000
Etizolam	4.463	95736	81834.0	597.7	2549699	10.000
Fentanyl	4.020	122791	253.0	32420.1	8165222	10.000
Flualprazolam	4.295	331192	347.9	96186.2	2549699	10.000
Flunitrazepam	4.375	686776	99080.4	416.6	2549699	10.000
Fluoxetine	4.222	1031463	1078160.8	28171.0	2159164	10.000
Flurazepam	4.079	1843741	3045323.0	1322.0	2549699	10.000
Hydrocodone	2.862	735879	306.4	351.1	4774765	10.000
Hydromorphone	2.335	756903	1008.9	201.6	180019	10.000
Imipramine	4.348	2924951	587.2	1005.9	3267878	10.000
Ketamine	3.248	1605163	9855.2	107.7	12920051	10.000
Lamotrigine	3.384	167332	209.2	57254.4	41777262	10.000
Levamisole	2.778	1828017	460.1	207.1	6692279	10.000
Levetireacetam	2.250	433042	464.6	336.0	41777262	10.000
Lorazepam	4.220	12978	60.7	5.2	2549699	10.000
Maprotiline	4.380	612777	91.9	153.8	3267878	10.000
MDA	2.809	1643693	1226.9	299.3	19293127	10.000
MDEA	3.068	3030221	1238.7	464.8	19293127	10.000
MDMA	2.901	3486684	1072.0	947.1	19293127	10.000
Meperidine	3.430	1667926	5936.8	2254.3	6692279	10.000
Meprobamate	3.359	124490	532.1	30.4	2539550	10.000
Methadone	4.298	3724883	1983.9	704.1	2069689	10.000
Methamphetamine	2.766	7551013	2747.7	90.7	19293127	10.000
Methocarbamol	3.278	56128	74.7	31860.5	2069689	10.000
Methylphenidate	3.341	5380892	3969.2	1695.4	20121652	10.000
Metoprolol	3.245	371737	1425431.6	254.8	6692279	10.000
Midazolam	4.586	368810	1268.3	12624.3	2549699	10.000
Mirtazapine	3.781	1800451	246.1	3148.4	6692279	10.000
Mitragynine	4.124	188484	98671.4	163116.6	6692279	10.000
Morphine	2.140	250866	∞	11112.7	180019	10.000
Norbuprenorphine	3.787	22848	9515.2	12169.8	1383626	10.000
Nordiazepam	4.503	116408	122739.6	1617.6	2549699	10.000
Norfentanyl	3.112	3680094	3912.9	1560.4	20784204	10.000
Norhydrocodone	2.773	52334	90.4	33.4	4774765	10.000
norketamine	3.328	159186	111.7	1101.7	12920051	10.000
Normeperidine	3.433	1808037	3168.5	600.6	41777262	10.000
Noroxycodone	2.695	399848	106.9	317.4	6403501	10.000
Nortriptyline	4.367	676611	196026.0	366.8	3267878	10.000
O-desmethyl-tramadol	2.668	4625268	1254.5	357.8	41777262	10.000
Olanzapine	3.088	14532	3922.7	41.3	32970	10.000
Oxazepam	4.301	42441	28.1	14.9	219356	10.000
Oxycodone	2.708	1281493	237.7	555.0	6403501	10.000
Oxymorphone	2.151	1122790	17119.1	343.4	180019	10.000
Paroxetine	4.326	92191	18663.4	161.6	2159164	10.000
Phenazepam	4.447	215894	74142.0	59232.6	2549699	10.000
Phencyclidine	3.800	3312252	1312.5	2699.9	6692279	10.000
Phentermine	2.918	52677	40.3	754.6	12920051	10.000
Phenytoin	3.891	52111	274.4	38.0	32970	10.000
Promethazine	4.286	3179292	815.6	1251.9	41777262	10.000
Pseudoephedrine	2.446	54562029	1182.0	1564.4	19293127	10.000
Quetiapine	4.293	2738478	933942.5	659188.7	20121652	10.000
Sertraline	4.529	397605	289307.4	261.1	2159164	10.000
Sufentanil	4.323	97718	218.2	43442.9	20784204	10.000
Tapentadol	3.235	3127698	1164.2	2586.2	2069689	10.000
Temazepam	4.469	488293	1316.5	48.8	2549699	10.000
Tramadol	3.230	4735435	21272.7	79.8	41777262	10.000
Trazodone	4.446	2241297	401.9	198.6	11338908	10.000

AM #25 Multi-Drug Screen Results

BWylee

Name	RT	Resp.	S/N	S/N	ISTD Resp.	Calc. Conc.
Venlafaxine	3.625	3832363	4277.0	318.3	2159164	10.000
Zaleplon	4.162	655881	366390.6	449.6	20121652	10.000
Zolpidem	4.085	4358415	55708.6	713.2	20121652	10.000
Zopiclone	3.971	199755	168.6	28.6	1102703	10.000

AM# 26: THC and Metabolites Screen in Blood by LC-MS/MS

B. Wylie

Extraction Date: 6/8/2021

Analyst: Britany Wylie

Plate lot#: 210412

Plate Expiration: 10-12-2021

Mobile phase A: 10mM Ammonium Formate

Mobile phase B: 0.1% Formic acid in MeOH

0.1% Formic Acid in Water

MTBE

Hexane

1N KOH

Saturated Phosphate Buffer

Blank Blood Lot: 20K20702

Neg Urine Lot: 5621

Column: Phenomenex Phenyl Hexyl (4.6x50mm: 2.6 um)

LCMS-QQQ ID: 69679

Pre-Analytic:

- 1. Check levels of mobile phases and needle wash refill as needed. Ensure waste is not full.
- 2. Ensure correct column is installed and begin mobile phase flow allow to equilibrate ~ 30 minutes.

Analytic:

- 1. Remove standards, plate, controls, and samples from cold storage. Allow to reach room temperature.
- 2. Urine hydrolysis: add 1.5 ml urine to blank plate, add 250 ul 1N KOH mix and incubate at 40 degrees for 15 minutes.
Pipette **1000 µL blood (calibrated pipette)** in wells of analytical (standards) plate. **Pipette ID: K52558g**
Pipette 1000 ul urine to analytical (standards) plate.
- 3. Place on shaking incubator at ambient temp., 900 rpm for 15 minutes.
- 4. Pipette **500 µL 0.1% formic acid in blood** wells **500 ul saturated phosphate buffer in urine** wells of analytical plate.
- 5. Place on shaking incubator at ambient temp., 900 rpm for 15 minutes.
- 6. Transfer **800 µL of blood acid or urine acid** mixture to corresponding wells of SLE+ plate.
- 7. Apply positive pressure for approx. 10-15 seconds (or until no liquid remains on top of sorbent).
(Load at 85-100 PSI- Selector to the right) Manifold ID: 66792
- 8. Wait 5 minutes.
- 9. Add **2.25 mL MTBE** (add in 3 increments of 750 µL).
- 10. Wait 5 minutes.
- 11. Apply positive pressure for approx. 10-15 seconds. *(12-15 PSI- Selector to the left)*.
- 12. Add **2.25 mL hexane** (add in 3 increments of 750 µL).
- 13. Wait 5 minutes.
- 14. Apply positive pressure for approx. 10-15 seconds. *(12-15 PSI- Selector to the left)*.
- 15. Remove plate containing eluate. Place on SPE Dry and evaporate to dryness at approx. 35°C.
SPE Dry ID: 66819
- 16. Reconstitute in **100 µL 100% LCMS MeOH** and heat seal plate with foil. Place in autosampler and run worklist.

Post-Analytic

- 1. Create batch and process data.
- 2. Calculated sample concentration of 1 ng/mL or greater for THC, 3 ng/mL or greater for THC-OH, and/or 5 ng/mL or greater for Carboxy-THC.
- 3. Retention time within +/- 2% or +/-0.100 min whichever is greater of the average retention time of the calibrators.
- 4. Did all QCs pass for each analyte? Yes
- 5. Central File Packet to include: LIMS Worklist, Method Checklist, Calibration and Control Reports

COMMENTS:

am 26
5/12/21 WORKLIST

BWylee

	1	2	3	4	5	6
A	IS + Cal. 1	neg blood	1333-1			IS + QC_1
B	IS + Cal. 2	1243-1	1334-1			IS + Cal. 7
C	IS + Cal. 3	1269-1	neg urine			IS + Cal. 6
D	IS + Cal. 4	1291-1	urine control			IS + Cal. 5
E	IS + Cal. 5	1295-1	1238-1			IS + Cal. 4
F	IS + Cal. 6	1305-1	1331-1			IS + Cal. 3
G	IS + Cal. 7	1306-1	1337-1			IS + Cal. 2
H	IS + QC_1	1312-1				IS + Cal. 1

All wells to contain 100 µl of residual DMSO

Case #: C2021-____-__

Toxicology AM method 27/26 external prep information

BWylee

working solution 15 ug/ml in meoh C-THC, THC-OH, 7.5 ug/ml THC

Stock solution 1mg/ml 7.5 ul each THC, 100 ug/ml 150 ul C-THC, 150 ul THC-OH in 9692.5 ul meOH

Ppd 8/26/20 Exp: 7/1/21 lot 82620 by AMN

Drug	lot	expiration
C-THC	FE01061702	3/1/2022
THC-OH	FE07221601	7/1/2021
THC	FE01041701	3/1/2022

AM 27/26 blood control 100 ul working solution lot () in 9900 ul blood lot ()

		Concentration 7.5 ng/ml THC, 15 ng/ml C-THC, THC-OH	
--	--	--	--

AM 27/26 urine control 400 ul working solution lot (82620) in 9600 ul urine

out of use

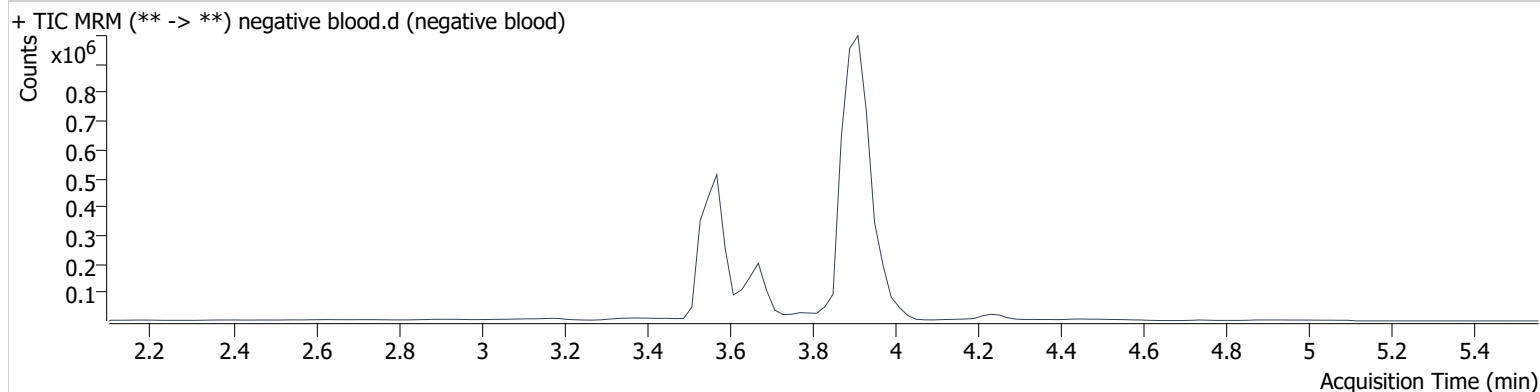
ppd 8/26/20 Exp 7/1/21 neg urine lot 73020	lot u82620	Concentration 30 ng/ml THC, and 60 ng/ml C-THC, THC-OH	by amn	10/4/2020
ppd 10/5/20 Exp 7/1/21 neg urine lot 10120	lot 10520	Concentration 30 ng/ml THC, and 60 ng/ml C-THC, THC-OH	by amn	1/12/2021
ppd 1/13/21 Exp 7/1/21 neg urine lot 10120	lot 11321	Concentration 30 ng/ml THC, and 60 ng/ml C-THC, THC-OH	by amn	3/28/2021
ppd 3/29/21 Exp 7/1/21 neg urine lot 2121	lot 32921	Concentration 30 ng/ml THC, and 60 ng/ml C-THC, THC-OH	by amn	5/27/2021
ppd 5/28/21 Exp 7/1/21 neg urine lot 5621	lot 52821	Concentration 30 ng/ml THC, and 60 ng/ml C-THC, THC-OH	by amn	

AM #26 Cannabinoids Screen Results *BWylie*

Batch results D:\MassHunter\Data\2021\am 25-26\6-08-21\QuantResults\thcs.batch.bin
Calibration Last Update 6/8/2021 9:33:53 PM

Instrument	69679	Data File	negative blood.d
Type	Sample	Sample	negative blood
Acq. Method	am 26 cann scr 5-5-20.m	Operator	Britany Wylie
Sample Position	P3-A2	Comment	
Injection Volume	5		
Acq. Date-Time	6/8/2021 6:16:30 PM		
Sample Info.			

Sample Chromatogram



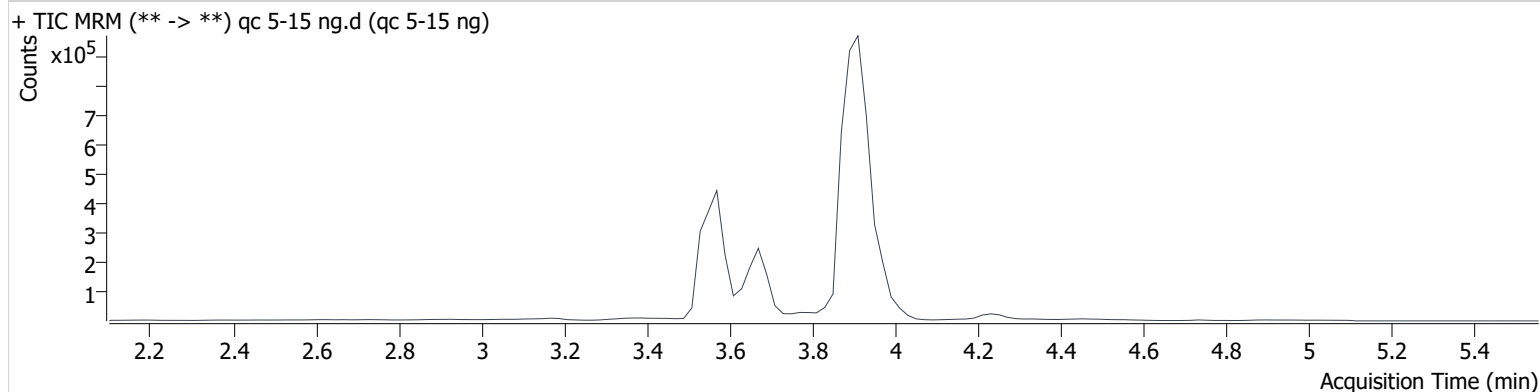
AM #26 Cannabinoids Screen Results *BWylie*

Batch results D:\MassHunter\Data\2021\am 25-26\6-08-21\QuantResults\thcs.batch.bin
Calibration Last Update 6/8/2021 9:33:53 PM

Instrument	69679	Data File	qc 5-15 ng.d
Type	QC	Sample	qc 5-15 ng
Acq. Method	am 26 cann scr 5-5-20.m	Operator	Britany Wylie
Sample Position	P3-H1	Comment	
Injection Volume	5		
Acq. Date-Time	6/8/2021 6:09:54 PM		

Sample Info.

Sample Chromatogram



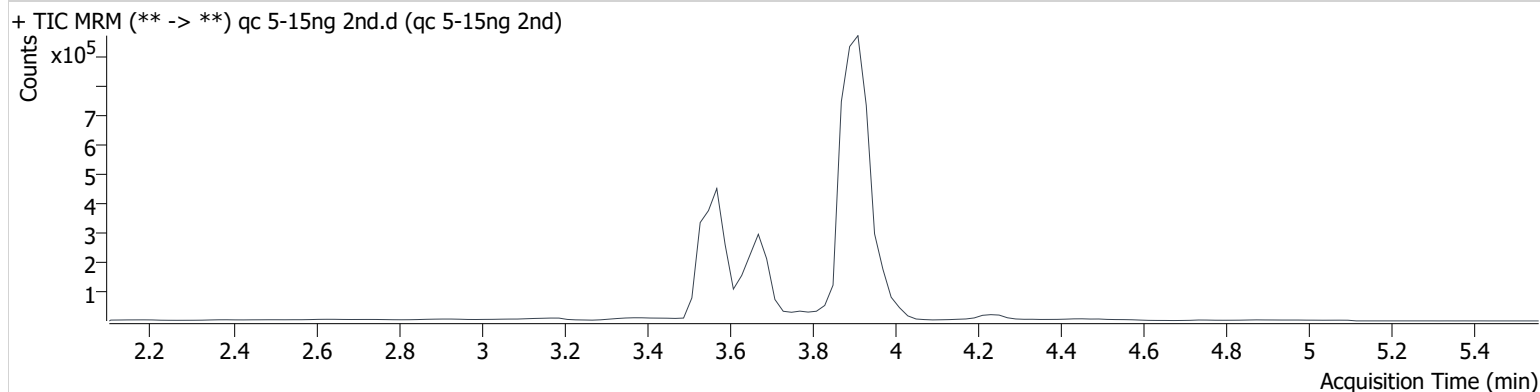
Name	RT	Resp.	ISTD Resp.	Final Conc.
THC	3.964	15613	424307	4.409 ng/ml
THC-COOH	3.672	103907	519665	14.673 ng/ml
THC-OH	3.578	13286	1683620	4.566 ng/ml

AM #26 Cannabinoids Screen Results *BWylie*

Batch results D:\MassHunter\Data\2021\am 25-26\6-08-21\QuantResults\thcs.batch.bin
Calibration Last Update 6/8/2021 9:33:53 PM

Instrument	69679	Data File	qc 5-15ng 2nd.d
Type	Sample	Sample	qc 5-15ng 2nd
Acq. Method	am 26 cann scr 5-5-20.m	Operator	Britany Wylie
Sample Position	P3-H1	Comment	
Injection Volume	5		
Acq. Date-Time	6/8/2021 8:15:08 PM		
Sample Info.			

Sample Chromatogram



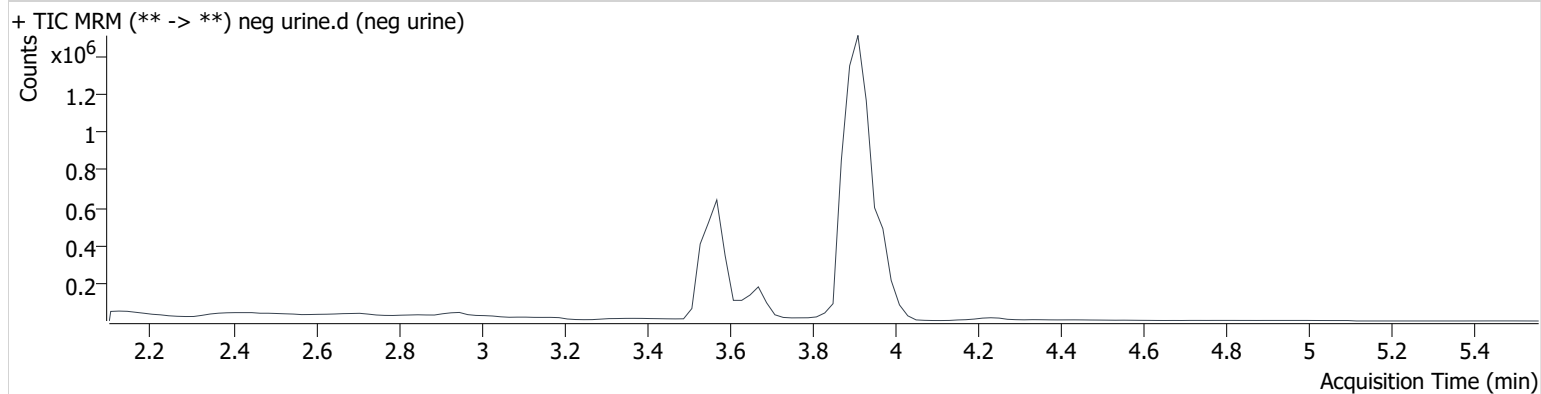
Name	RT	Resp.	ISTD Resp.	Final Conc.
THC	3.964	13409	349755	4.594 ng/ml
THC-COOH	3.692	143642	680852	15.494 ng/ml
THC-OH	3.578	16313	1844153	5.136 ng/ml

AM #26 Cannabinoids Screen Results *BWylie*

Batch results D:\MassHunter\Data\2021\am 25-26\6-08-21\QuantResults\thcs.batch.bin
Calibration Last Update 6/8/2021 9:33:53 PM

Instrument	69679	Data File	neg urine.d
Type	Sample	Sample	neg urine
Acq. Method	am 26 cann scr 5-5-20.m	Operator	Britany Wylie
Sample Position	P3-C3	Comment	
Injection Volume	5		
Acq. Date-Time	6/8/2021 7:22:30 PM		
Sample Info.			

Sample Chromatogram

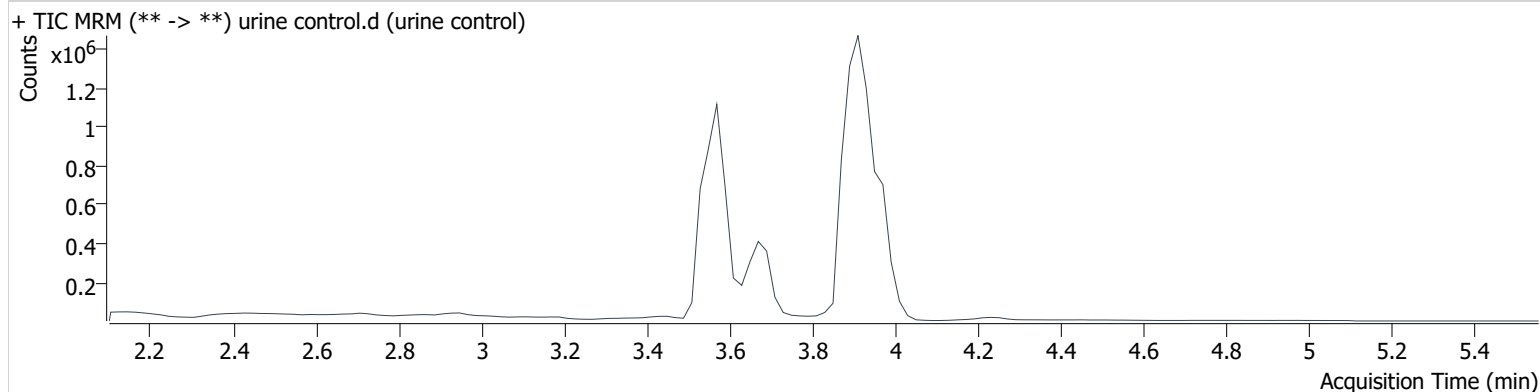


AM #26 Cannabinoids Screen Results *BWylie*

Batch results D:\MassHunter\Data\2021\am 25-26\6-08-21\QuantResults\thcs.batch.bin
Calibration Last Update 6/8/2021 9:33:53 PM

Instrument	69679	Data File	urine control.d
Type	Sample	Sample	urine control
Acq. Method	am 26 cann scr 5-5-20.m	Operator	Britany Wylie
Sample Position	P3-D3	Comment	
Injection Volume	5		
Acq. Date-Time	6/8/2021 7:29:06 PM		
Sample Info.			

Sample Chromatogram



Name	RT	Resp.	ISTD Resp.	Final Conc.
THC	3.984	216251	1362156	19.071 ng/ml
THC-COOH	3.692	352097	586241	44.529 ng/ml
THC-OH	3.578	214397	2605453	49.044 ng/ml

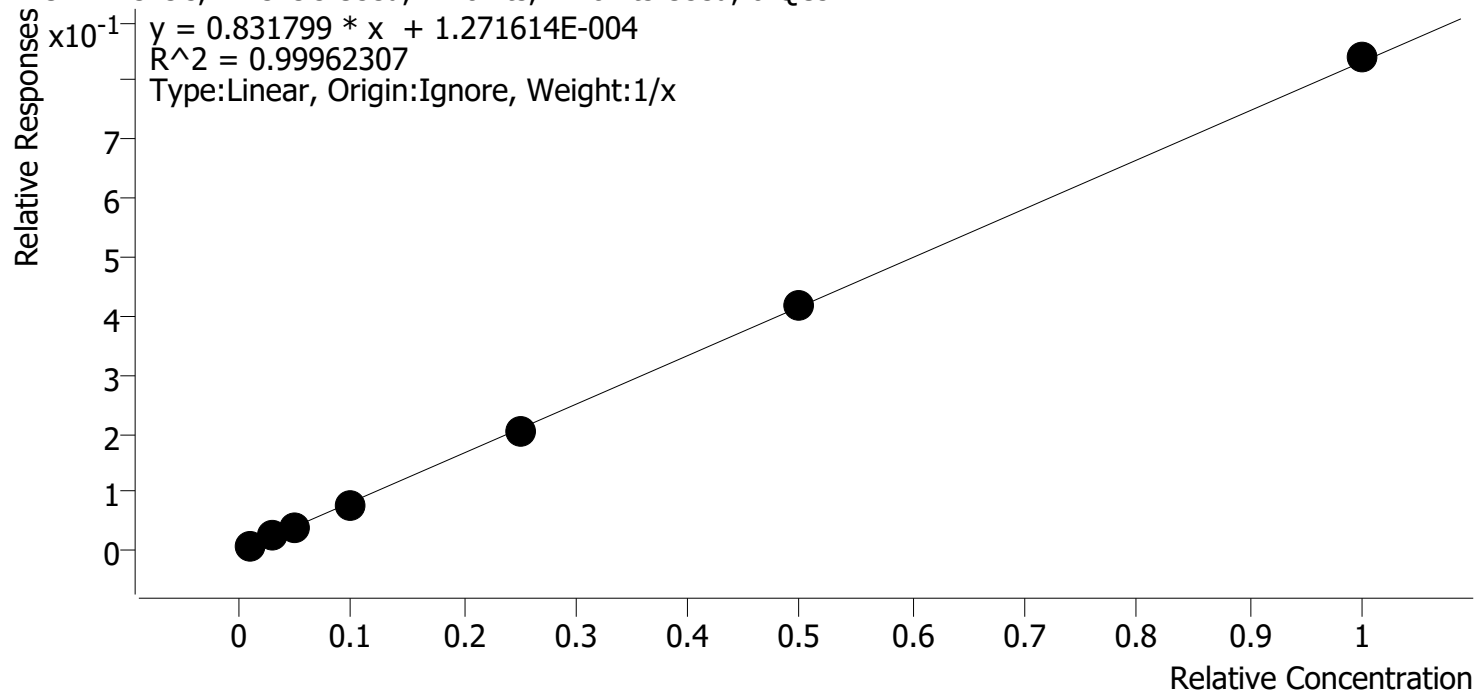
Compound Calibration Report



Batch results D:\MassHunter\Data\2021\am 25-26\6-08-21\QuantResults\thcs.batch.bin
Last Cal. Update 6/8/2021 9:33 PM
Analyst Name ISP\datastor
Analyte THC

Internal Standard THC-d3

THC - 7 Levels, 7 Levels Used, 7 Points, 7 Points Used, 0 QCs



Sample	Level	Enabled	Expected Concentration	Final Concentration	Accuracy
cal 1	1	✓	1.0	1.1	110.5
cal 2	2	✓	3.0	3.0	100.6
cal 3	3	✓	5.0	4.7	93.0
cal 4	4	✓	10.0	9.6	95.7
cal 5	5	✓	25.0	24.8	99.3
cal-6	6	✓	50.0	50.0	99.9
cal-7	7	✓	100.0	100.9	100.9

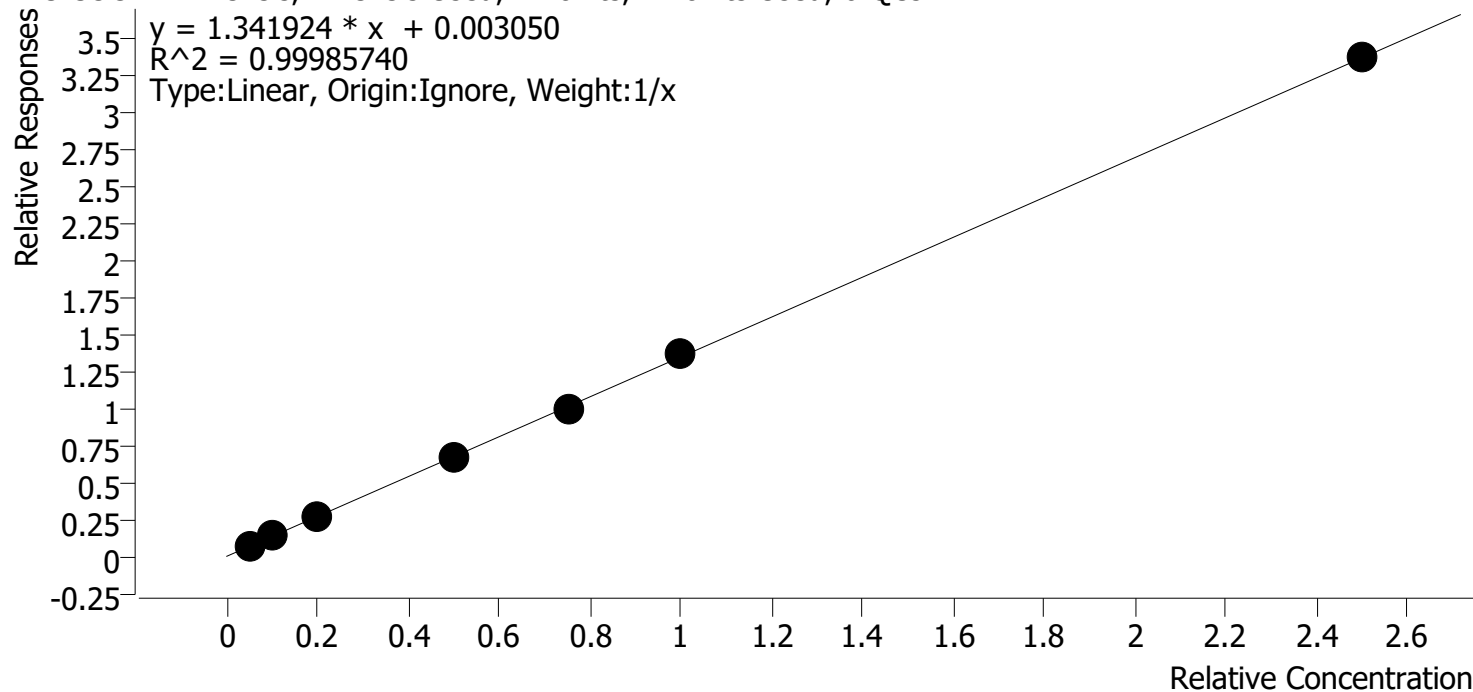
Compound Calibration Report

Byylee

Batch results D:\MassHunter\Data\2021\am 25-26\6-08-21\QuantResults\thcs.batch.bin
Last Cal. Update 6/8/2021 9:33 PM
Analyst Name ISP\datastor
Analyte THC-COOH

Internal Standard THC-COOH-d9

THC-COOH - 7 Levels, 7 Levels Used, 7 Points, 7 Points Used, 0 QCs



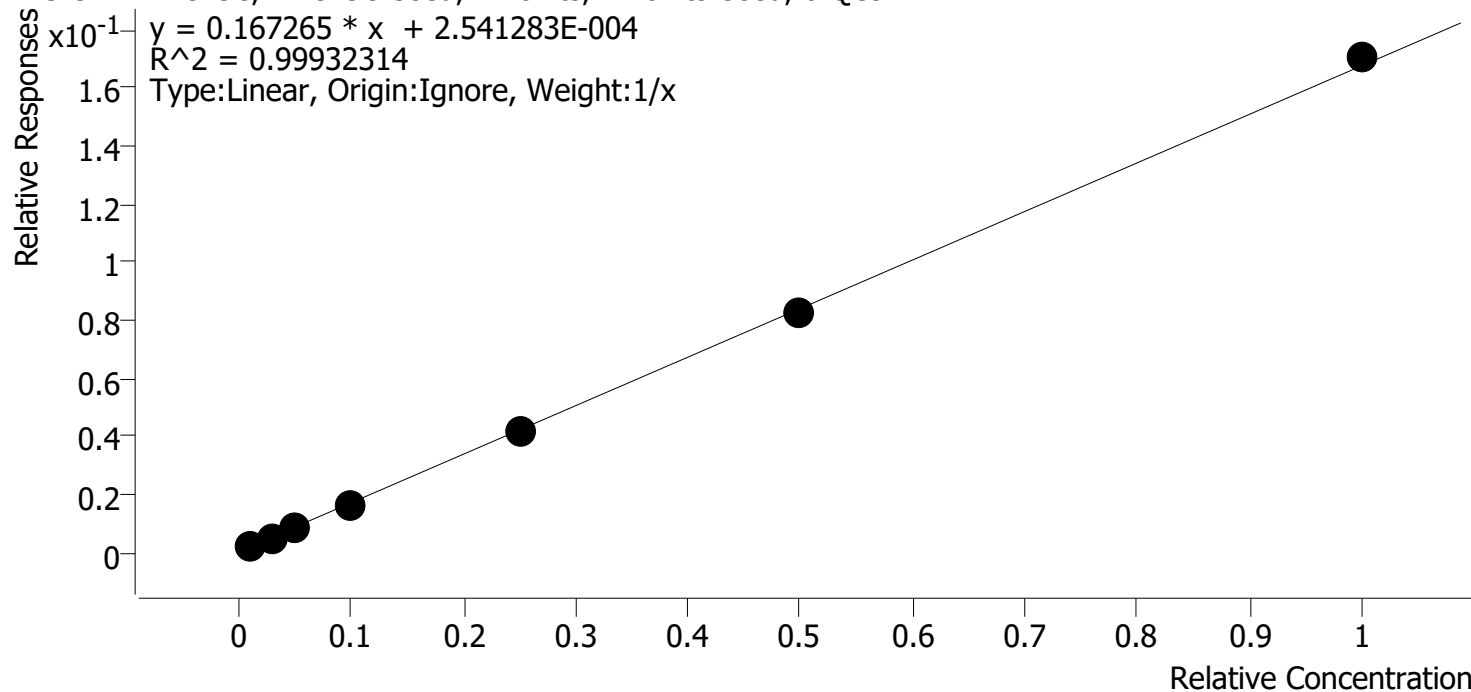
Sample	Level	Enabled	Expected Concentration	Final Concentration	Accuracy
cal 1	1	✓	5.0	5.2	103.7
cal 2	2	✓	10.0	9.9	99.3
cal 3	3	✓	20.0	19.5	97.3
cal 4	4	✓	50.0	49.5	99.1
cal 5	5	✓	75.0	74.3	99.1
cal-6	6	✓	100.0	101.5	101.5
cal-7	7	✓	250.0	250.1	100.0

Compound Calibration Report

Boyle

Batch results D:\MassHunter\Data\2021\am 25-26\6-08-21\QuantResults\thcs.batch.bin
Last Cal. Update 6/8/2021 9:33 PM
Analyst Name ISP\datastor
Analyte THC-OH **Internal Standard** THC-OH-d3

THC-OH - 7 Levels, 7 Levels Used, 7 Points, 7 Points Used, 0 QCs



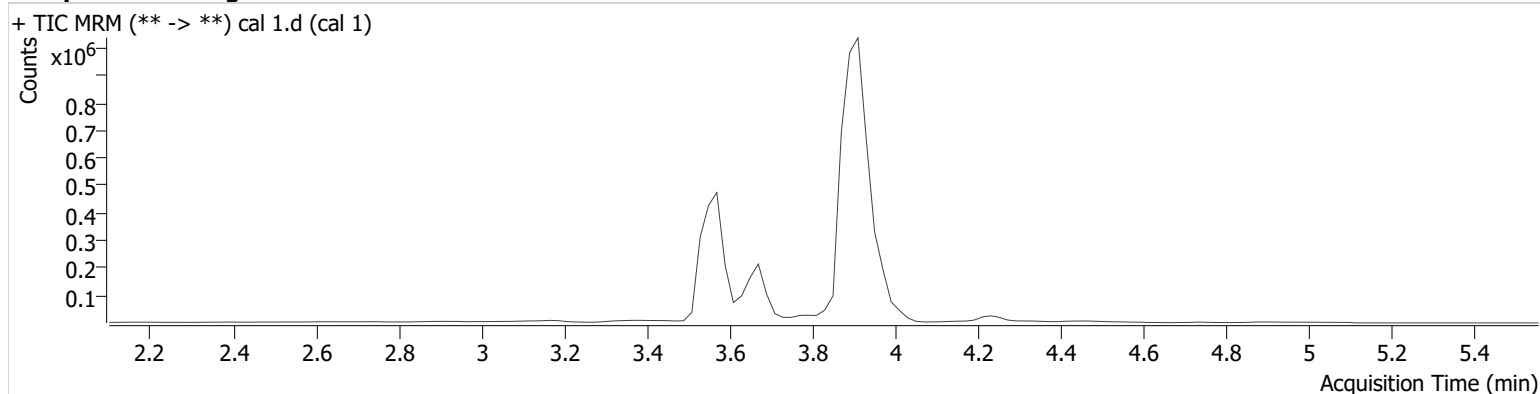
Sample	Level	Enabled	Expected Concentration	Final Concentration	Accuracy
cal 1	1	✓	1.0	1.2	115.9
cal 2	2	✓	3.0	2.9	96.4
cal 3	3	✓	5.0	4.7	93.3
cal 4	4	✓	10.0	9.5	95.3
cal 5	5	✓	25.0	24.6	98.6
cal-6	6	✓	50.0	49.5	98.9
cal-7	7	✓	100.0	101.6	101.6

AM #26 Cannabinoids Screen Results *BWylie*

Batch results D:\MassHunter\Data\2021\am 25-26\6-08-21\QuantResults\thcs.batch.bin
Calibration Last Update 6/8/2021 9:33:53 PM

Instrument	69679	Data File	cal 1.d
Type	Cal	Sample	cal 1
Acq. Method	am 26 cann scr 5-5-20.m	Operator	Britany Wylie
Sample Position	P3-A1	Comment	
Injection Volume	5		
Acq. Date-Time	6/8/2021 5:17:11 PM		
Sample Info.			

Sample Chromatogram



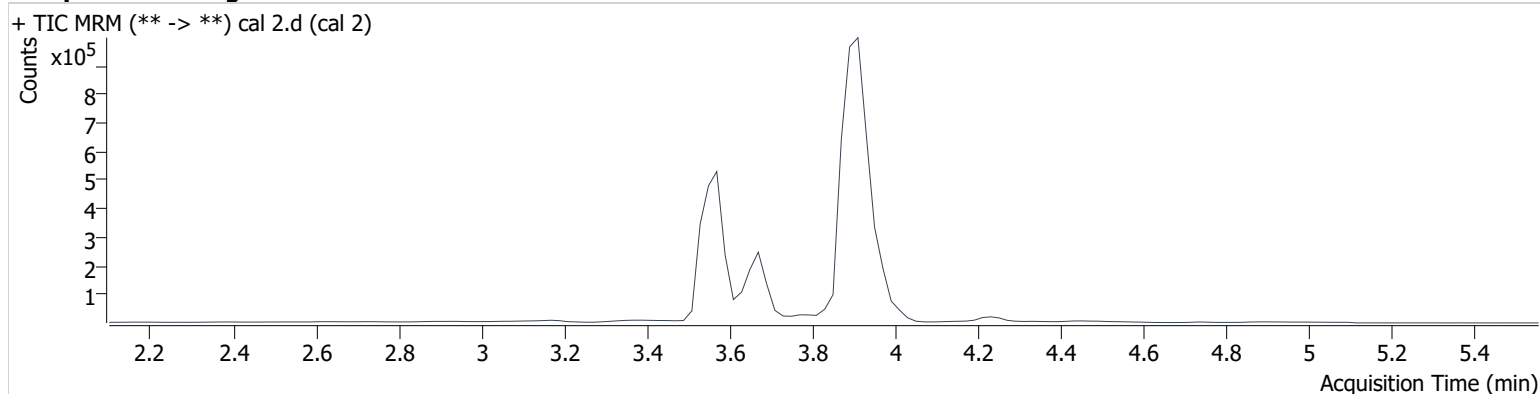
Name	RT	Resp.	ISTD Resp.	Final Conc.	
THC	3.964	4170	447408	1.105 ng/ml	Low
THC-COOH	3.672	37686	518854	5.185 ng/ml	Low
THC-OH	3.578	4007	1827428	1.159 ng/ml	Low

AM #26 Cannabinoids Screen Results *BWylie*

Batch results D:\MassHunter\Data\2021\am 25-26\6-08-21\QuantResults\thcs.batch.bin
Calibration Last Update 6/8/2021 9:33:53 PM

Instrument	69679	Data File	cal 2.d
Type	Cal	Sample	cal 2
Acq. Method	am 26 cann scr 5-5-20.m	Operator	Britany Wylie
Sample Position	P3-B1	Comment	
Injection Volume	5		
Acq. Date-Time	6/8/2021 5:23:48 PM		
Sample Info.			

Sample Chromatogram



Name	RT	Resp.	ISTD Resp.	Final Conc.	
THC	3.964	11201	443878	3.018 ng/ml	
THC-COOH	3.672	75869	556353	9.935 ng/ml	Low
THC-OH	3.578	10137	1990745	2.893 ng/ml	Low

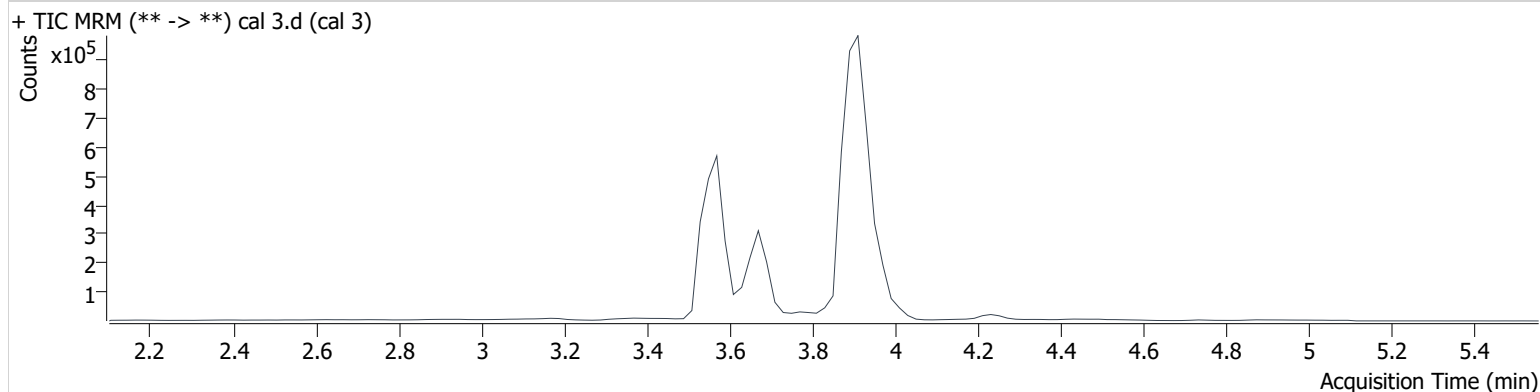
AM #26 Cannabinoids Screen Results *BWylie*

Batch results D:\MassHunter\Data\2021\am 25-26\6-08-21\QuantResults\thcs.batch.bin
Calibration Last Update 6/8/2021 9:33:53 PM

Instrument	69679	Data File	cal 3.d
Type	Cal	Sample	cal 3
Acq. Method	am 26 cann scr 5-5-20.m	Operator	Britany Wylie
Sample Position	P3-C1	Comment	
Injection Volume	5		
Acq. Date-Time	6/8/2021 5:30:24 PM		

Sample Info.

Sample Chromatogram



Name	RT	Resp.	ISTD Resp.	Final Conc.
THC	3.964	16567	426751	4.652 ng/ml
THC-COOH	3.672	156617	592937	19.456 ng/ml
THC-OH	3.578	16388	2034481	4.664 ng/ml

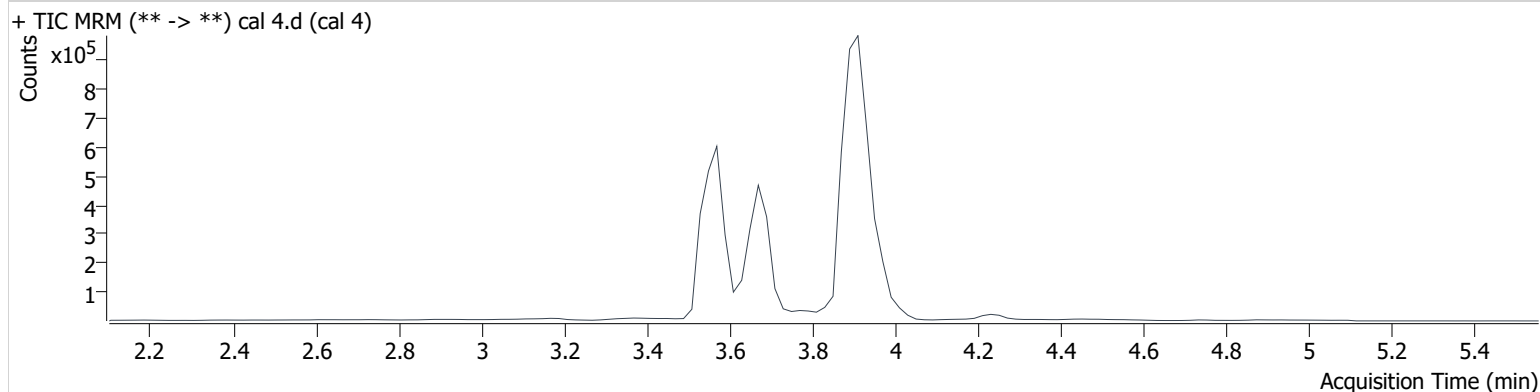
AM #26 Cannabinoids Screen Results *BWylie*

Batch results D:\MassHunter\Data\2021\am 25-26\6-08-21\QuantResults\thcs.batch.bin
Calibration Last Update 6/8/2021 9:33:53 PM

Instrument	69679	Data File	cal 4.d
Type	Cal	Sample	cal 4
Acq. Method	am 26 cann scr 5-5-20.m	Operator	Britany Wylie
Sample Position	P3-D1	Comment	
Injection Volume	5		
Acq. Date-Time	6/8/2021 5:37:00 PM		

Sample Info.

Sample Chromatogram



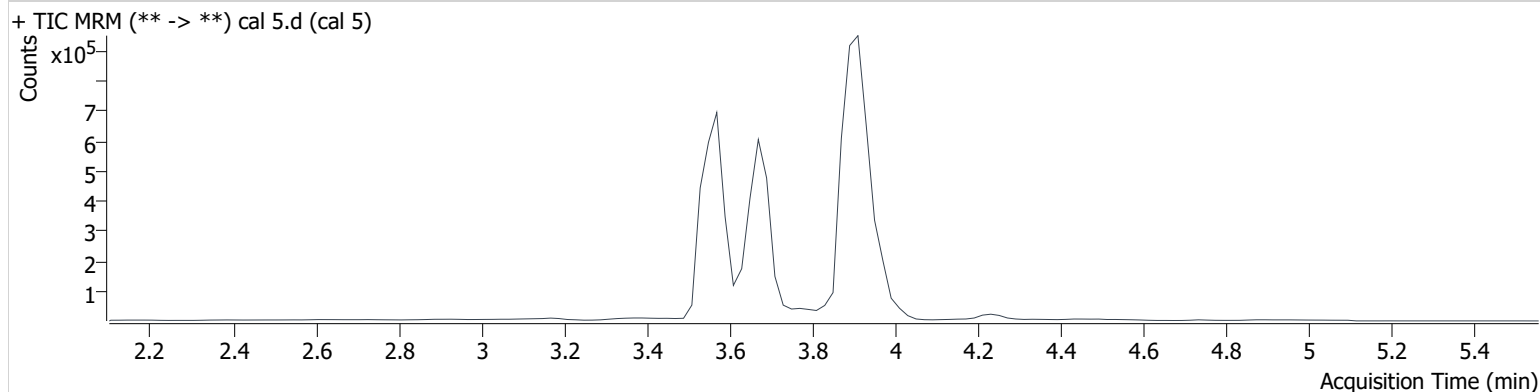
Name	RT	Resp.	ISTD Resp.	Final Conc.
THC	3.964	35212	441545	9.572 ng/ml
THC-COOH	3.672	390935	585418	49.536 ng/ml
THC-OH	3.578	32913	2033204	9.526 ng/ml

AM #26 Cannabinoids Screen Results *BWylie*

Batch results D:\MassHunter\Data\2021\am 25-26\6-08-21\QuantResults\thcs.batch.bin
Calibration Last Update 6/8/2021 9:33:53 PM

Instrument	69679	Data File	cal 5.d
Type	Cal	Sample	cal 5
Acq. Method	am 26 cann scr 5-5-20.m	Operator	Britany Wylie
Sample Position	P3-E1	Comment	
Injection Volume	5		
Acq. Date-Time	6/8/2021 5:43:36 PM		
Sample Info.			

Sample Chromatogram



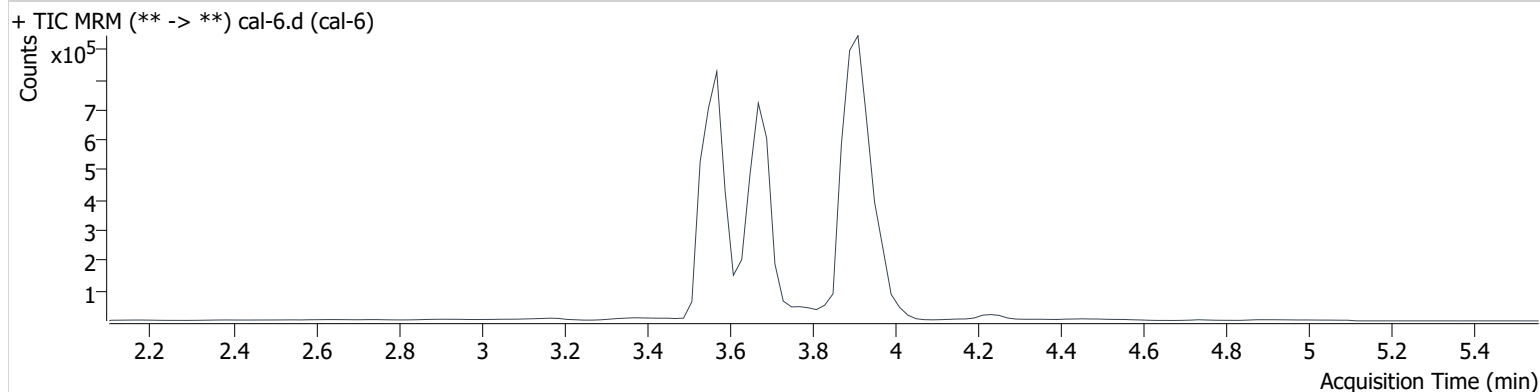
Name	RT	Resp.	ISTD Resp.	Final Conc.
THC	3.964	83494	403942	24.834 ng/ml
THC-COOH	3.672	585196	585163	74.297 ng/ml
THC-OH	3.578	82708	1993987	24.646 ng/ml

AM #26 Cannabinoids Screen Results *BWylie*

Batch results D:\MassHunter\Data\2021\am 25-26\6-08-21\QuantResults\thcs.batch.bin
Calibration Last Update 6/8/2021 9:33:53 PM

Instrument	69679	Data File	cal-6.d
Type	Cal	Sample	cal-6
Acq. Method	am 26 cann scr 5-5-20.m	Operator	Britany Wylie
Sample Position	P3-F1	Comment	
Injection Volume	5		
Acq. Date-Time	6/8/2021 5:50:12 PM		
Sample Info.			

Sample Chromatogram



Name	RT	Resp.	ISTD Resp.	Final Conc.
THC	3.964	178590	429659	49.955 ng/ml
THC-COOH	3.672	771391	565148	101.488 ng/ml
THC-OH	3.578	157067	1892491	49.467 ng/ml

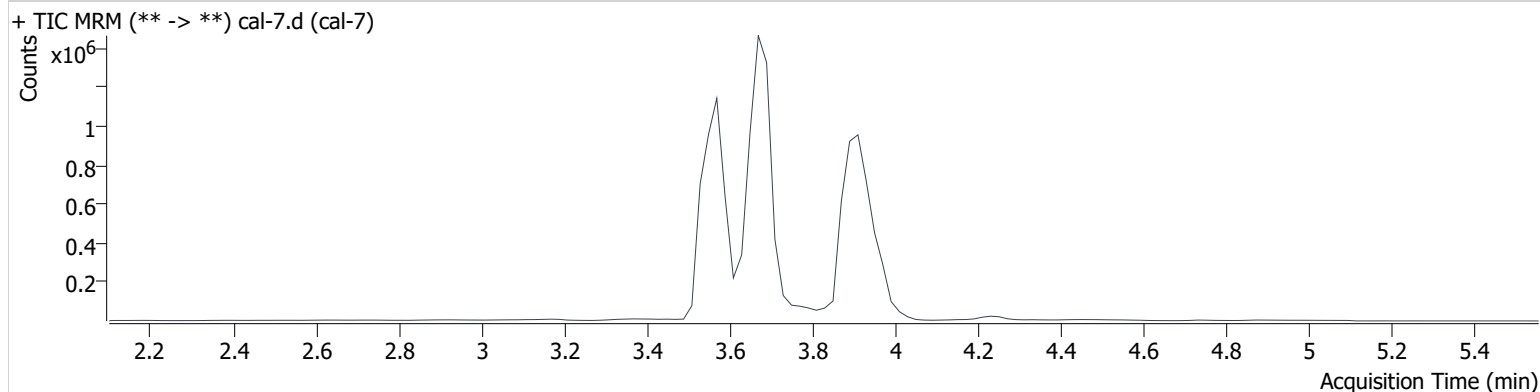
AM #26 Cannabinoids Screen Results *BWylie*

Batch results D:\MassHunter\Data\2021\am 25-26\6-08-21\QuantResults\thcs.batch.bin
Calibration Last Update 6/8/2021 9:33:53 PM

Instrument	69679	Data File	cal-7.d
Type	Cal	Sample	cal-7
Acq. Method	am 26 cann scr 5-5-20.m	Operator	Britany Wylie
Sample Position	P3-G1	Comment	
Injection Volume	5		
Acq. Date-Time	6/8/2021 5:56:48 PM		

Sample Info.

Sample Chromatogram



Name	RT	Resp.	ISTD Resp.	Final Conc.
THC	3.964	331383	394924	100.863 ng/ml
THC-COOH	3.672	1890832	562874	250.103 ng/ml
THC-OH	3.578	311220	1827792	101.646 ng/ml